

PATCH MANAGER

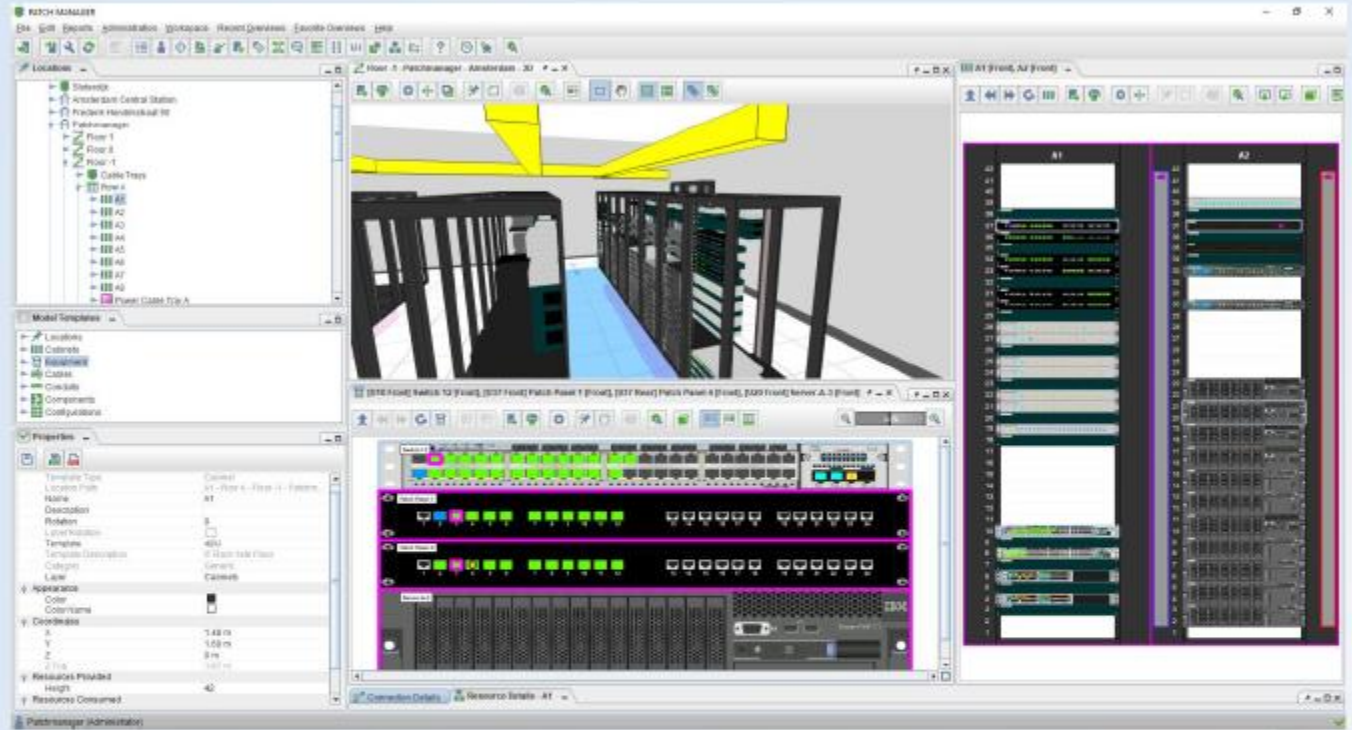
The Leading Connectivity and Asset
Management Software Solution

PATCH MANAGER at a Glance

- Plan, document and manage changes to the physical network layer
- Ideal for data centers, offices, campuses and outside plants
- Easy to maintain
- Scalable and future-proof
- Report on your infrastructure and data
- Supplemental HTML5 application for working on the go
- Integration with third-party systems

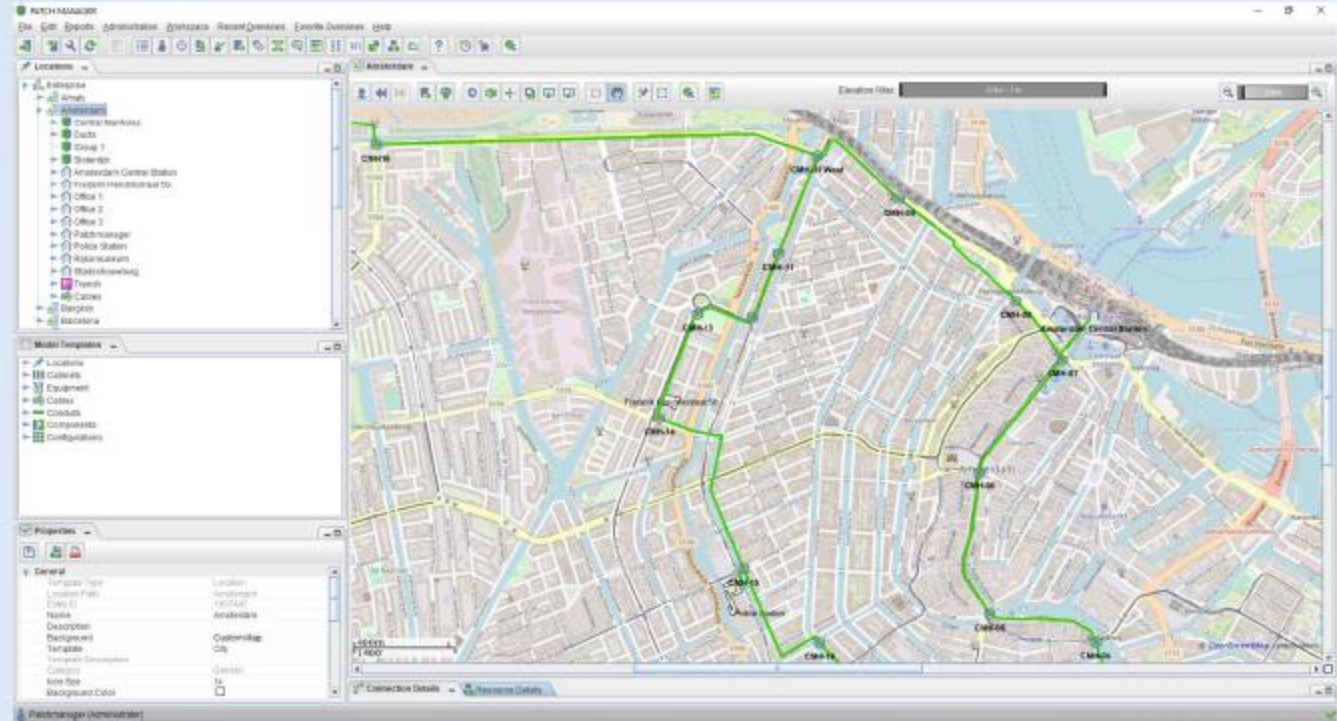
Data Centers

- Manage your customer space in colocation data centers
- Manage and plan your rack space usage and power consumption
- Manage the lifecycle of your data center assets
- Manage your data center floor space
- Manage the impact of loss of power and network connectivity
- Manage your 'Moves', 'Adds' and 'Changes' efficiently
- Data mine your assets and connectivity for engineering and management reporting

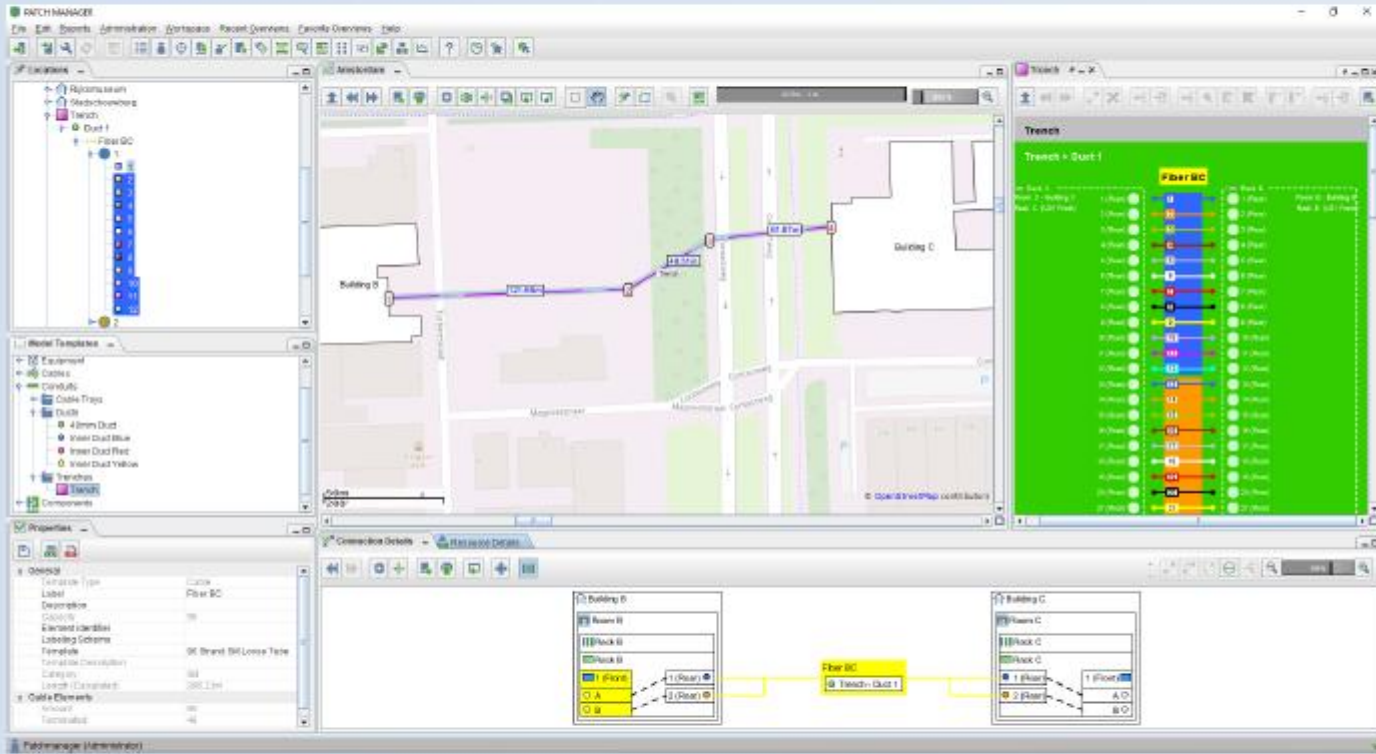


Outside Plants

- Easily manage fiber backbone availability
- Manage cabling and assets in manholes
- Manage fiber splicing and air blown fiber
- Generate routes for new cables

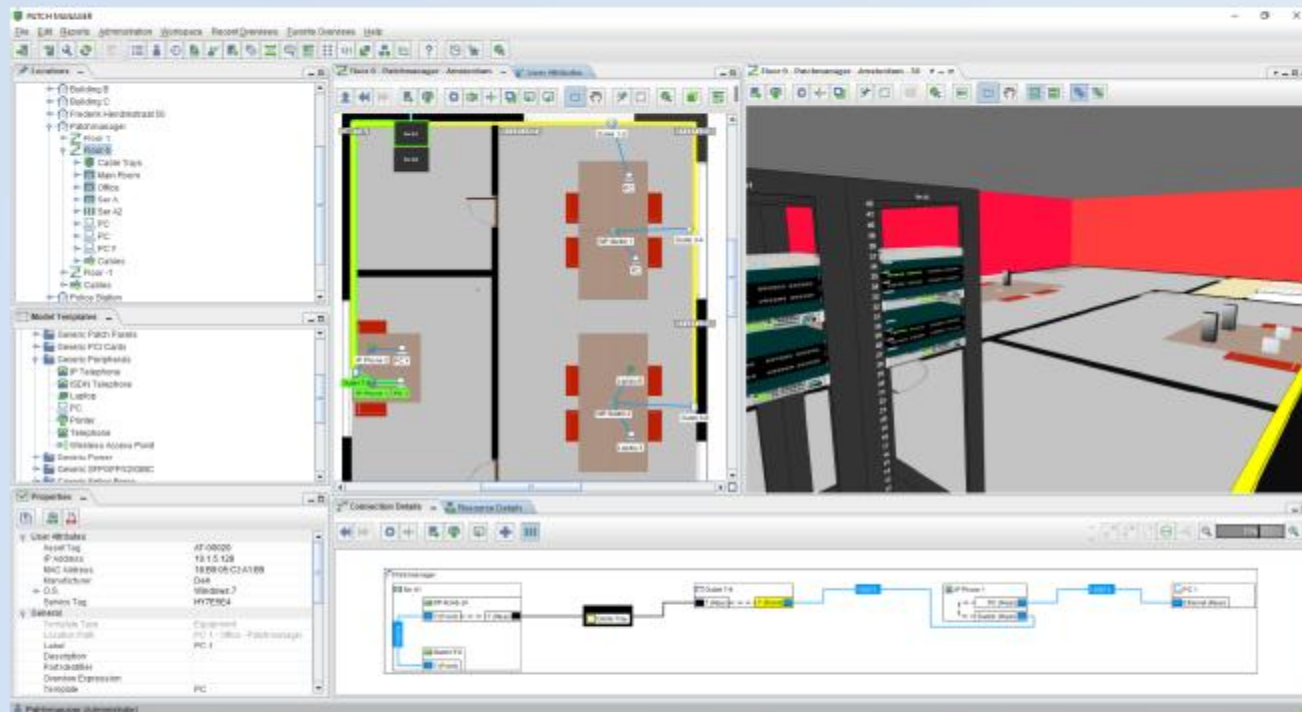


Campuses



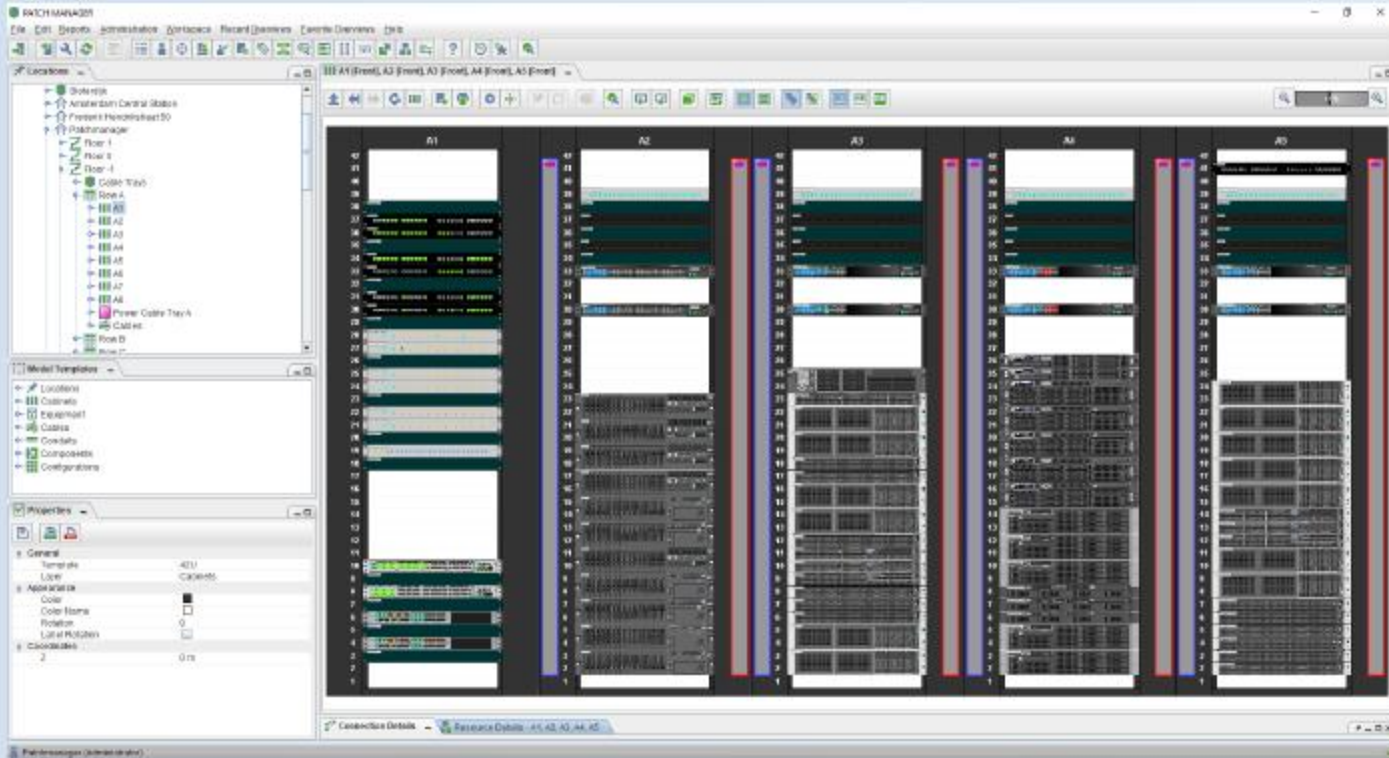
- Generate and maintain campus map layouts
- Design and manage your campus backbone cabling
- Visualize the paths of cables through a campus
- Link your inside and outside networks

Offices



- Manage your analog and digital telephone circuits
- Manage your data circuits
- Manage patch panel, switch and outlet availability
- Manage equipment room rack space availability
- Manage and identify unused and spare network assets
- Manage your cable duct availability
- Manage your equipment room rack elevations and floor plans
- Manage your office floor plans
- Easily locate your network assets

Realistic Cabinet View



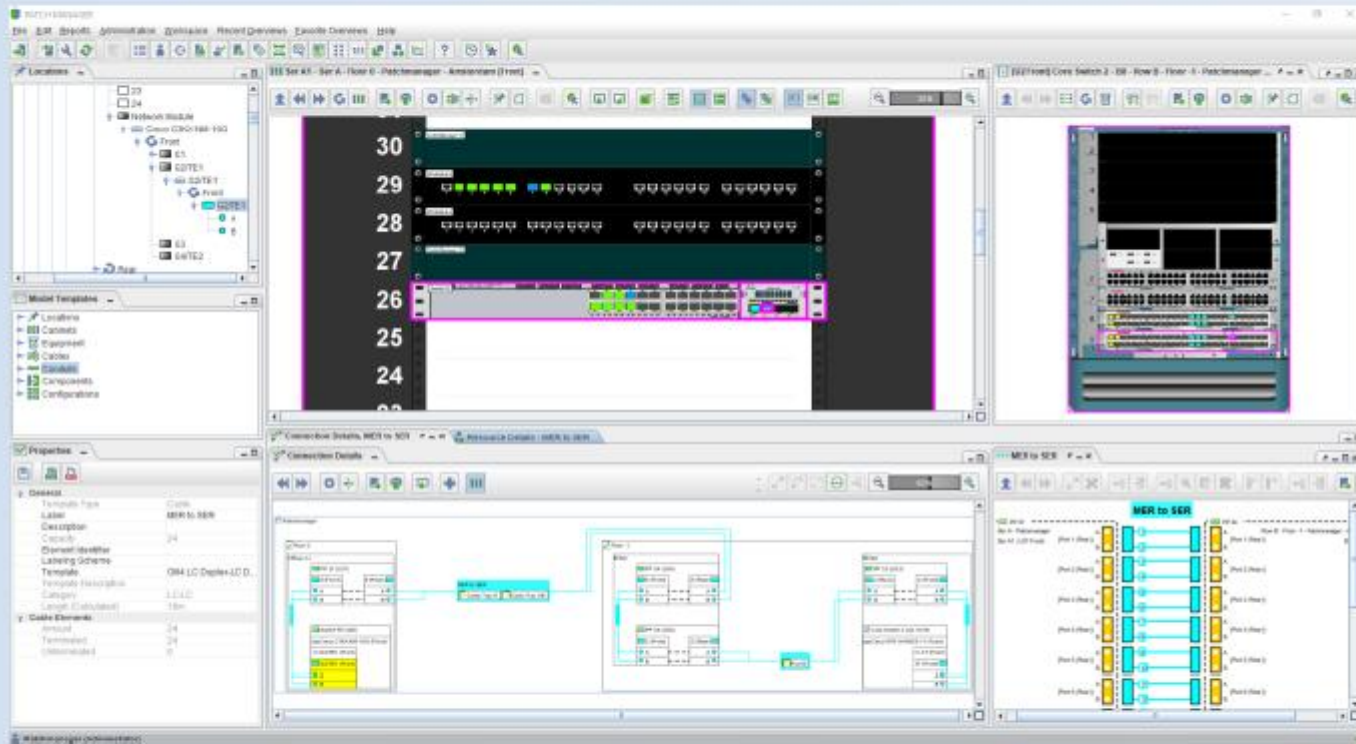
- View from front, rear and side
- Open multiple cabinets side-by-side
- Open racks from different locations in one view
- Elevation option allows for stacking

Walk Through Your Data Center

- Fully navigable 3D mode
- Configure dimensions, coordinates and elevation



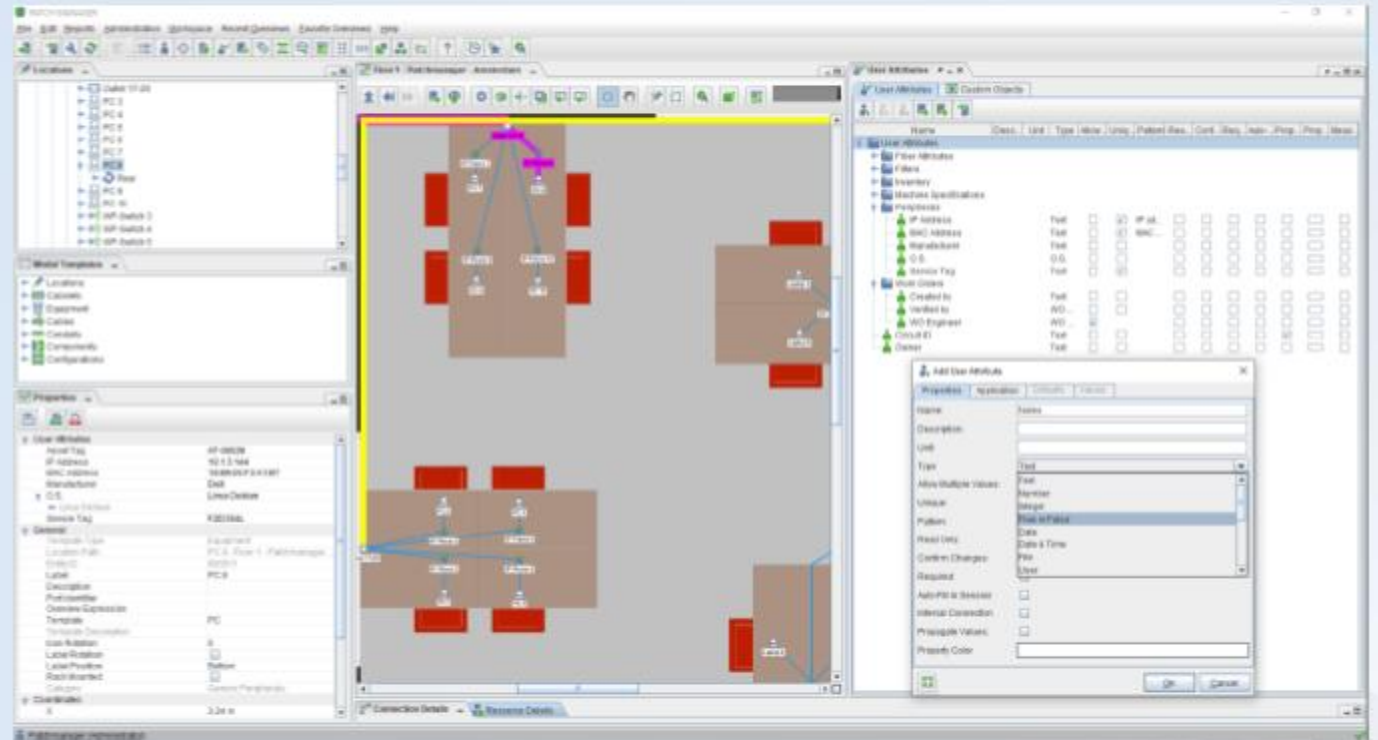
In-Depth Connection Details



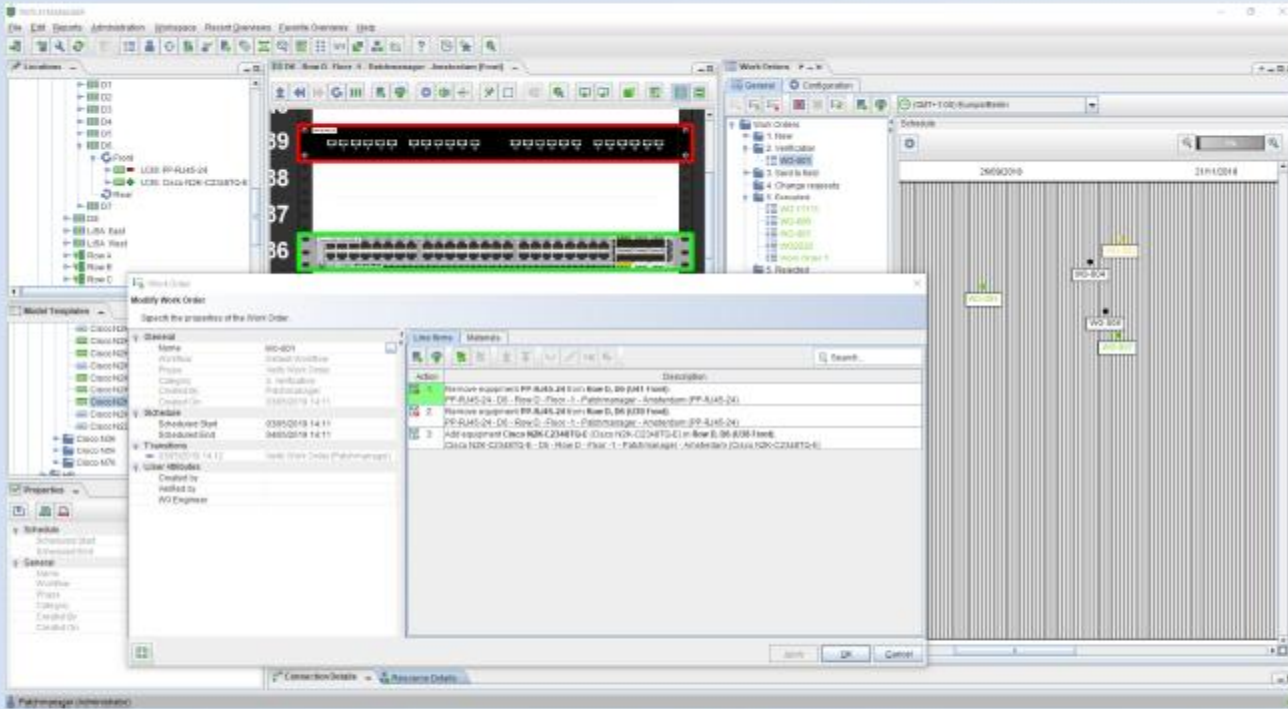
- Detailed information on end-to-end traces
- Fully customizable – display only the information you require
- Highlight connection routes in the graphical overview

Tailor-Made Information

- User-defined data fields allow you to store information that's relevant to YOU
- Attach these custom fields to any object
- Freedom to choose the type of data: text, numbers, file attachments, images



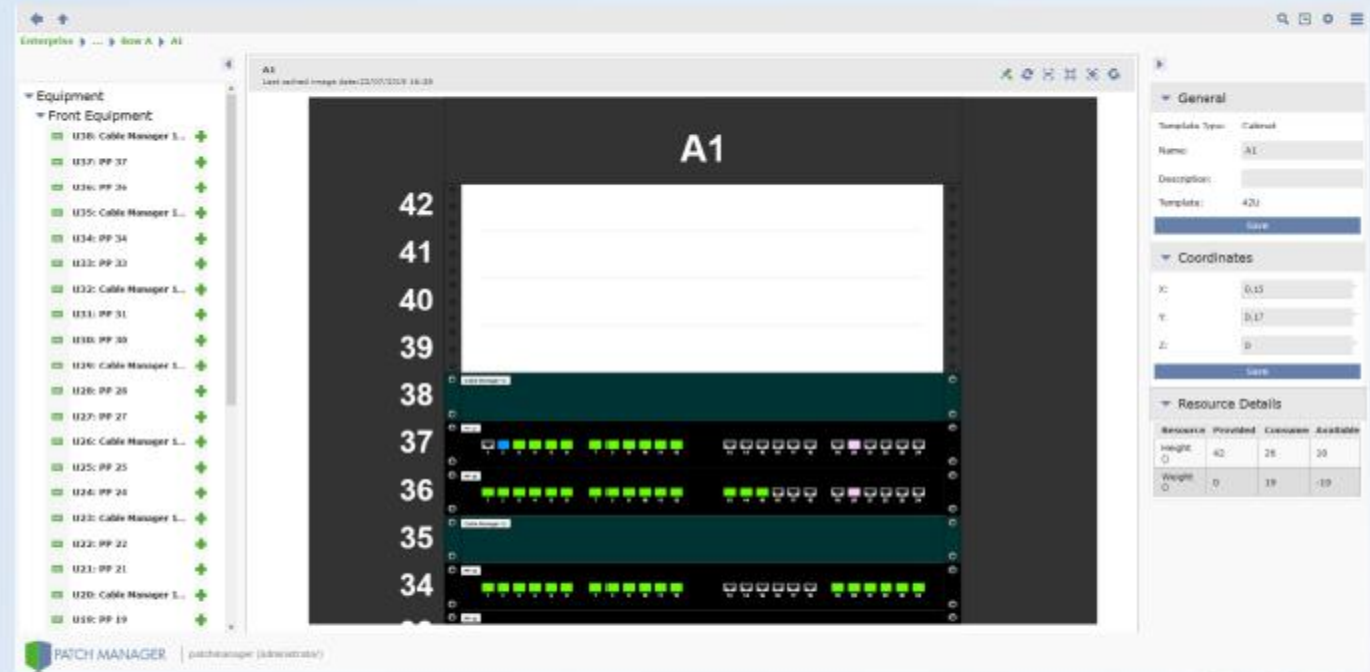
A Smart Way to Manage Changes



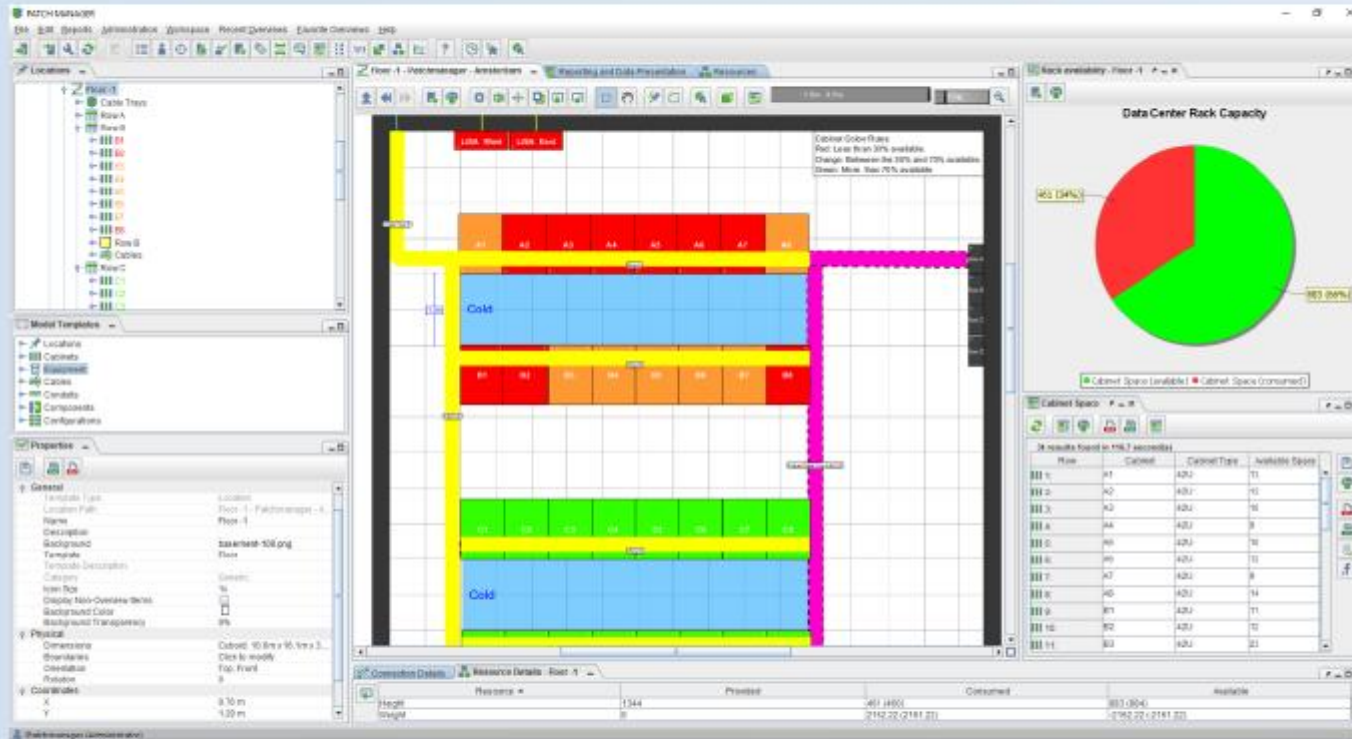
- Work Orders provide a practical solution to documenting infrastructure changes
- Easy to tell whether equipment is already installed, for future installation or to be removed
- Populate lists of materials needed to execute changes
- Customizable workflows allow you to choose the process your changes go through
- Automated notification emails

PATCH MANAGER in Your Pocket

- HTML5 browser application allows you to make changes on-the-go
- Compatible with mobile devices such as tablets and smartphones
- Perfect for viewing and performing work orders onsite



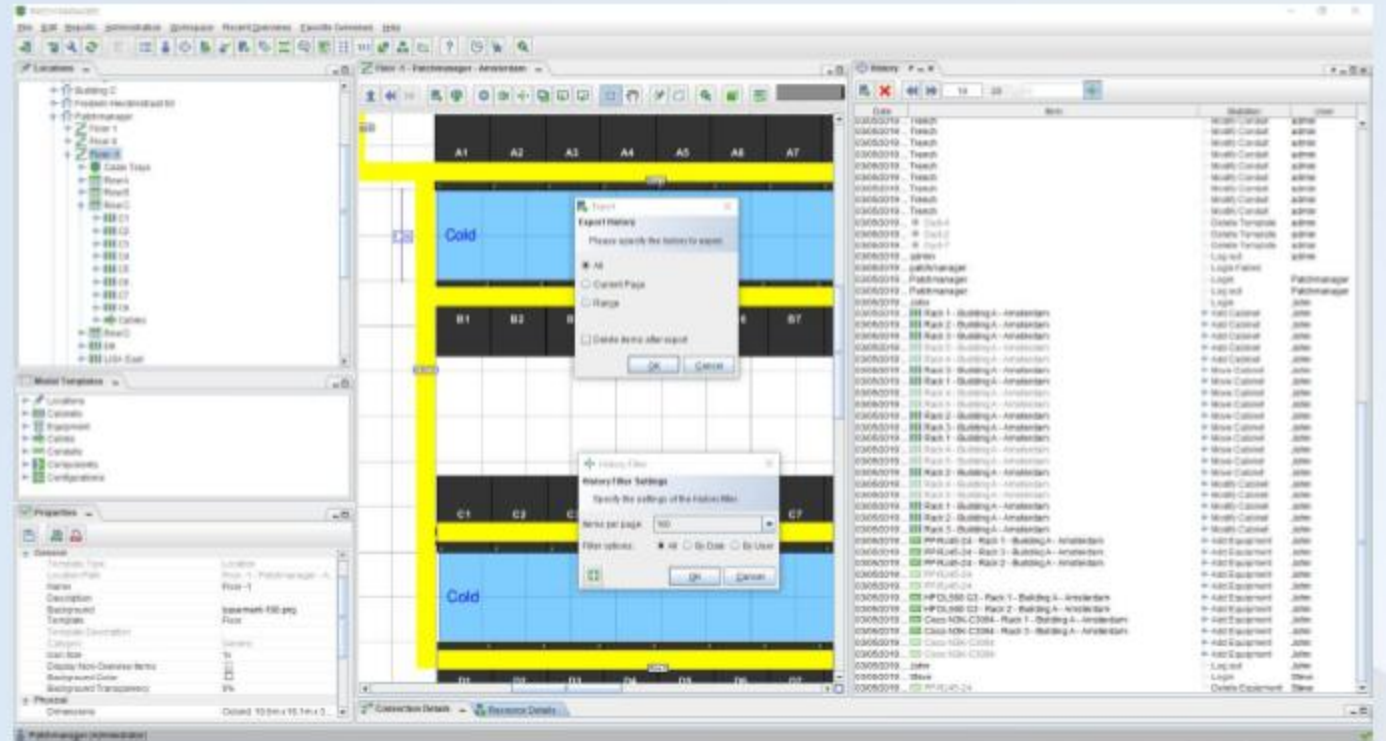
Be Flexible with Your Data



- Powerful reporting functionality
- Customize reports to return only the data you need
- Turn your reports into charts
- Export to CSV/PDF

Every Change Accounted For

- Global history allows you to see what was changed and by whom
- Instance-level history lets you focus on specific objects
- Export your history to CSV



Technical Features

- Client-server application
- Platform independent – compatible with Windows, Linux and MacOS
- Supports wide-range of relational database systems, such as MySQL, MariaDB, Microsoft SQL, PostgreSQL and Oracle
- Compatible with LDAP, SSO and Active Directory
- Can be hosted in-house or as a SaaS solution
- Extensive REST API allows for seamless third-party integration

Tell Me More...

- Fine-grained user management and permissions
- Automatic labeling
- External applications
- Capacity Management
- Monitoring
- Comprehensive importing/exporting functionality

Request an interactive demo from your representative!

OPTRONICS TECHNOLOGIES SA, www.optronics.gr, optronics@optronics.gr