

## High Precision Optical Fiber Cleaver

# S327



Operation by placing on your desk



Operation by holding in one hand



Blade position can be renewed without tools



The most durable blade on the market  
(65000 cleaves)

One-click Blade Rotation

Quickly Replaceable Blade  
(defined by user)

Versatile – Handheld or Desktop

Switchable opening angle depending  
on use

Consistent cleaving quality

The Fitel S327 high precision fiber optic cleaver, ergonomically designed for a range of Telecoms and Production applications.

This one-action cleaver provides seamless and repeatable cleaving for both single and ribbon fiber.

Capable of 65,000 cleaves the S327 offers the longest blade life in the market. Easy blade replacement can be done in 1 minute with no special tools and needs no other adjustments.

The small footprint allows handheld operation or traditional desktop use and fiber ends are automatically collected in the waste bin.

## Specification

Description	S327
Applicable fiber	Silica
Fiber count	Single fiber
	Ribbon fiber 250 μm: 2~12 fiber ribbon 200 μm: 2~16 fiber ribbon
Clad diameter	125 μm
Coating diameter	Single fiber: 0.20~3.0 mm
	Ribbon fiber: 0.20~0.40 mm×0.25 mm pitch 0.20~0.40 mm×0.20 mm pitch
Cleave length	Single fiber: 3mm~*1
	Tape: 10mm~
Cutting blade life	65,000 fiber (2,500 fiber per cutting blade position)*2
Dimension	88W×93D×54H mm (Close for carrying)
Weight	320 g

\*1 Cutting lengths of more than 3 mm but less than 5 mm are only available with a coating diameter of 0.25 mm or less.

\*2 The cutting blade life depends on the operation environment and condition. The number can vary and is not guaranteed.  
0.20 mm pitch ribbon fiber decrease of cleaves.

## Standard package

Item	P/N	Quantity
S327 Main Body	S327A-01	1
Waste Bin	S327X-12	1
Hexagonal Wrench	S327X-16	2
Carrying Case	S327X-17	1
Single Fiber Adapter*3	S327X-18	1
Operating Instructions	FTS-B616	1

\*3 Single Fiber Adaptor scales 5~16 mm

## Optional components

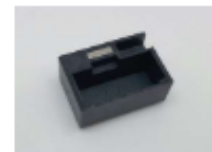
Item	P/N	SPQ
Waste Bin	S327X-12	1
Carrying Case	S327X-17	3
Single Fiber Adapter*3	S327X-18	1
Blade Exchange Set*4	S327X-24	1

\*3 Single Fiber Adaptor scales 5~16 mm

\*4 If parts other than Blade, such as the Rubber pad, are worn out, replacing Blade alone may not restore the initial performance.



S327 Main Body



Waste Bin



Carrying Case



Hexagonal Wrench



Single Fiber Adapter



Blade Exchange Set (Optional component)

## FURUKAWA ELECTRIC CO., LTD. <https://www.furukawa.co.jp/en/>

Head Office: Tokiwabashi Tower, 6-4 Otemachi 2-chome, Chiyoda-ku, Tokyo 100-8322 Japan

TEL: +81-3-6281-8500

fec.abr-opt-splicer@furukawaelectric.com

\* Please understand that contents of this catalog may change without notice.

**Export Control Regulations** The products and/or technical information presented in this publication may be subject to the application of the Foreign Exchange and Foreign Trade Act and other related laws and regulations in Japan. In addition, the Export Administration Regulations (EAR) of the United States may be applicable. In cases where exporting or reexporting the products and/or technical information presented in this publication, customers are requested to follow the necessary procedures at their own responsibility and cost. Please contact the Ministry of Economy, Trade and Industry of Japan or the Department of Commerce of the United States for details about procedures.